

BIKING TRAILS

The mountains call!



REGIONALNA RAZVOJNA AGENCIJA
Bjelasica, Komovi & Prokletije



365





Biking Trails

Three biking trails on the territory of Berane, Mojkovac and Kolasin connect villages, katuns, mountain huts and cultural monuments. One reveals the wonders of tame, fertile Polimlje, the other the fairy mountain of Bjelasica and the third the wobbly, mystic areas of Sinjajevina and the ancient life of cattlemen on the mountain.

These are one day tours. The length of each of them is around twenty kilometres. Nevertheless, it might even be better to spend the night in a mountain hut or in the katun and enjoy also on the way back.

Aside from occasional sharp ascents, your biggest problem on these tours will be the pedal stopping beauty, tempting detours and paths that drag you their way. The roads are of descent quality, mostly gravel. The trails are signposted and with accessories (benches, dustbins).

In town centres there are info boards with drawn maps and configuration of the terrain. GPS data of the routes can be found on the web page www.bjelasica-komovi.me



Berane

Budimlja - Banjevac

Length: 22,25

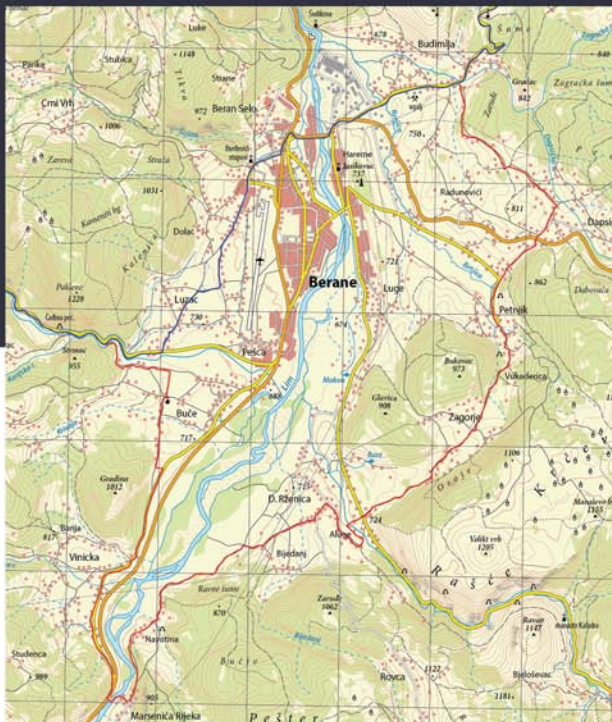
Starting altitude: 684masl

Highest altitude: 843masl

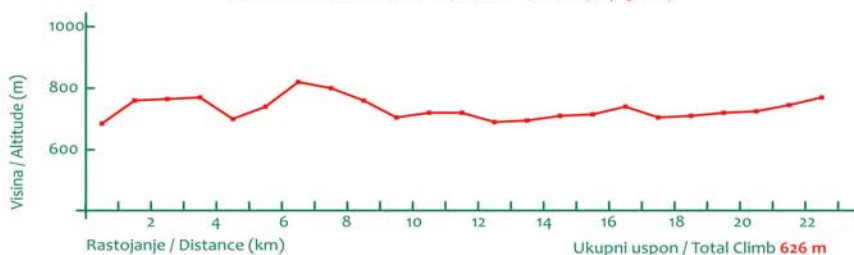
This biking trail passes through most of the countryside area of the municipality of Berane. Those are areas of exceptional beauty, mild green landscapes of Lim valley. Parts of the trail pass through forests, across small interesting bridges and plains along the river. There are nice houses in the villages, both traditional and new. What might be interesting is that along the main road, there are many smaller joining forest and other paths and it might happen that charmed with beauty, while taking photos, one wonders of to some other side. But do not worry, the locals are extremely hospitable and kindhearted, and they will gladly help you find your way out of the maize. Start of the route is on the 4th kilometre from the centre of the town.

There are sections with gravel road, and occasionally some bad asphalt. The route crosses the main road twice, and caution is recommended. There is only one more difficult ascent. The route ends at the spot where the road to Lubnice and Bjelasica branches off to the left, and the road to Berane to the right. Here the route joins one of the national biking trails "Top Trail 3" that is coming from the direction of Lubnice.





**BA 01 BUDIMLJA - DAPSIĆE - PETNJK - ZAGORJE - DONJA RŽANICA - NAVOTINA
- RIJEKA MARSENIĆA - VINICKA - BUČE (22,25KM)**



Ukupni uspon / Total Climb **626 m**





Kolasin

Kolasin - Goles

Length: 19,4 km

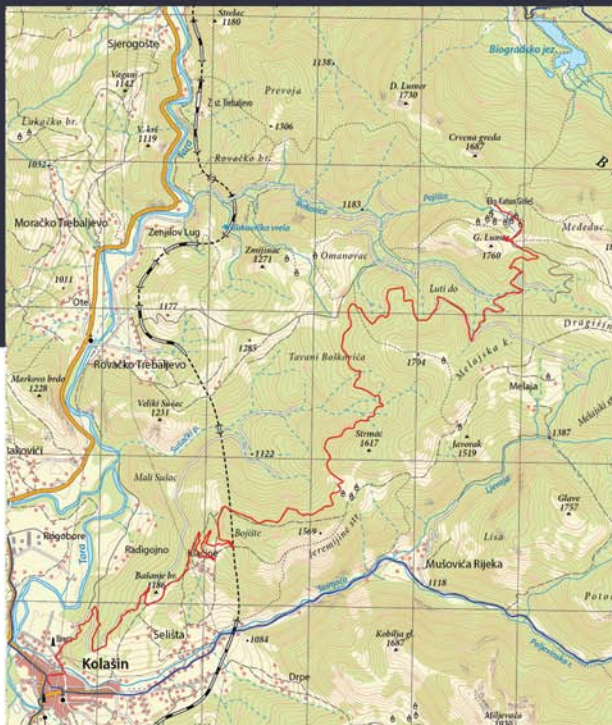
Starting altitude: 956masl

Highest altitude: 1791masl

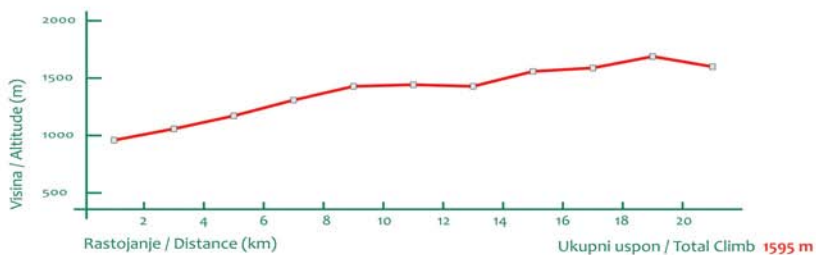
The route, which might be called “Bjelasica up, up to Goles”. Goles is a beautiful katun bordering Biogradska Gora National Park, where you will be welcomed by exceptional hosts. You can also spend the night in the katun (there are two eco villages) and the meal you will be served will consist only of homemade food from this region. You can also witness the making of the famous leafy cheese and take part in the everyday work of the people.

And to Goles the path goes from the centre of Kolasin (Trg Borca), across Basanje hill, through beech forests, passing by the katuns where villagers go to pick blueberries and medicinal herbs, to fantastic viewpoints. First, Kljuc and other peaks of Bjelasica will appear, and when one passes the village of Klacine, as a reward, one is offered the view to Kolasin, proud Komovi, Vucje and Maglic. It is more probable to meet an animal than a vehicle along the solid gravel road. Close to the very end of the route there are also nice downhills and steep ascents, but after a short rest in the katun every effort is forgotten.





KL 01 KOLAŠIN - BAŠANJE BRDO - GOLEŠ (19,4KM)





Mojkovac

Mojkovac - Ruzica

Length: 20,7

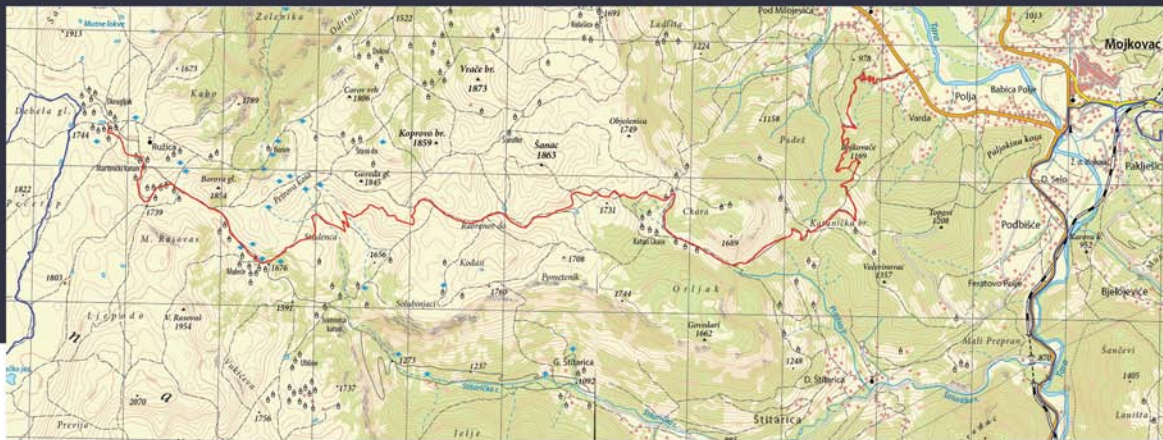
Starting altitude: 810masl

Highest altitude: 1773masl

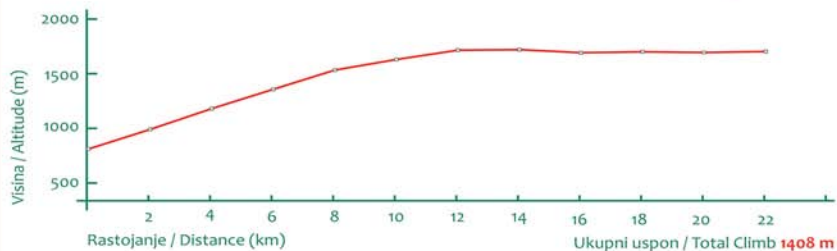
A challenge for every biker and lover of nature. It is the adventure one places into dearest of memories. So many things are packed into these twenty or so kilometres. So many times one should stop, not just to take a break. On viewpoints enchanting views on Bjelasica and Moracke mountains. Flocks of sheep in the meadows, interesting watering places. One should also listen to the birds. Katuns take turns, each interesting in its own way: Ckara, Donji Mulec, Gornji Mulec, Okrugljak. Almost a thousand meters difference in altitude. The air gets thinner, the view brighter, and the spaces of Sinjajevina vaster and more intriguing. On the katun, life is the same as centuries ago- the fire is burning in the hut even during the hottest of summer days, the smell of hot bread and fresh milk spreads around, the cheese is put into wooden containers, dry sheep skins filled with sour cream. Horses graze around freely. Hard working hosts greet guests with joy and share everything that is on the table.

Start is from Polje, at the info board, less than two kilometres towards Zabljak. For the most part there is a very good gravel road. The end of the route is katun Okrugljak, from which one can see the church Ruzica, a traditional gathering point. In the mountain hut Ckara, one can spend the night and prepare some food.





MK 01 MOJKOVAC: POLJA - KATUN CKARA - RUŽICA (Katun Okrugljak) (20,7KM)







Year-round tourism in mountain destinations of B&H and Montenegro

This publication has been produced with the assistance of the European Union. Its contents are the sole responsibility of Regional Development Agency for Bjelasica, Komovi and Prokletije and can in no way be taken to reflect the views of the European Union.



This project is funded by the EU



IPA Cross-border Cooperation Programme
Bosnia and Herzegovina – Montenegro